

O P E N H O U S E

**Our House is Your House**

THE  
L I G H T E R M A N

The Lighterman  
The Broadcaster

King's Cross  
White City

[openhouselondon.com](https://openhouselondon.com)

Vol. 01

Private Events Supplement © 2023



# What's inside.

## ABOUT

1-2  
5-6  
5-6

Private Events  
Exclusive Hire  
Food & Drinks

## SPACES

7-12  
10-20  
10-20  
10-20  
10-20  
10-20

**The Lighterman**  
First Floor Dining Room  
Canalside Bar & Terrace  
Canalside Bar  
Ground Floor Long Table  
Exclusive Hire

10-20

**Contacts**

# Incredible. For hire.

**Our private event spaces are never an afterthought: they have been built into our venues from the design stage.**

Each has its own distinct personality that highlights timeless design and seasonal dining and drinking. Our dining rooms boast warmly designed areas that are perfect for meetings and dinners alike; our quiet private spaces are equally stylish as they are functional, while our rooftop bar with London views provides a backdrop for showstopping occasions. Put simply, our venues offer some of the best event spaces in Central London – and our team is on hand to craft the perfect experience with you.





# Exclusive meets casual.

**With locations in some of London's most desired areas, we are well placed to host large events in the heart of the city.**

We can make entire venues available across our destinations, which feature unmatched capacity, ambience and views: perfect for corporate events, brand launches, weddings and filming. For weddings, our partnerships with sought-after retailers and artisans give you a direct line to potential suppliers, and our team is happy to make these introductions for you.

# Local. Honest. Sustainable.

**Our modern British event menus are centred around contemporary British pub cooking that is both relaxed and refined.**

Made with seasonal, local ingredients, we offer a range of dishes, from fresh salads and flatbreads, to elegant, produce-led plates. Our bar offers a selection of carefully crafted cocktails, biodynamic wines, local spirits and craft beers. When we create our menus, we always make sure the produce we're using is as sustainable, fresh and local as possible.





## THE LIGHTERMAN

---

**3 Granary Square, London N1C 4BH**  
**[theligherman.co.uk](http://theligherman.co.uk)**  
**[events@openhouselondon.com](mailto:events@openhouselondon.com)**  
**020 7034 5428**  
**@thelightermankx**

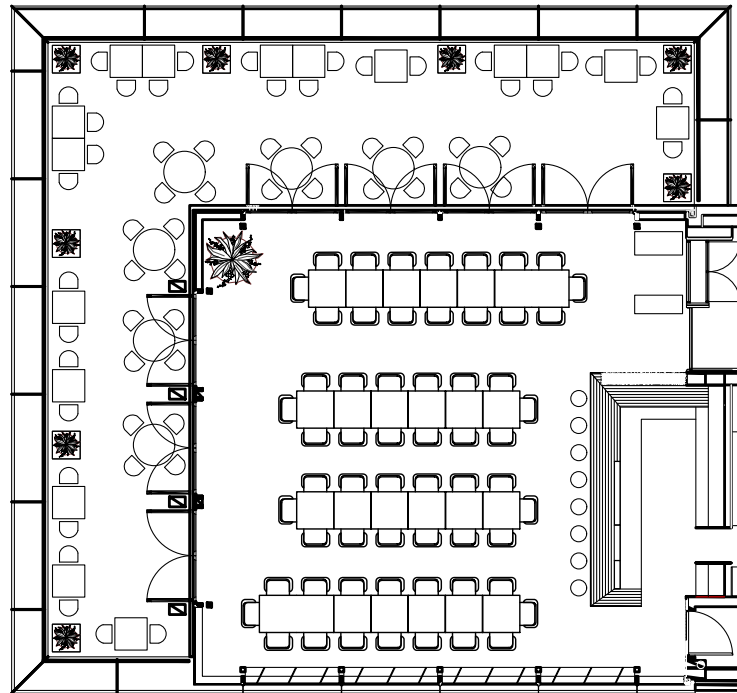
A centrepiece of Granary Square in King's Cross, The Lighterman is a sleekly-designed modern British gastropub that has become a hub for busy Londoners looking for a pleasant spot for work lunches, post-work

meet-ups and celebrations. The venue features an outdoor drinking area that faces the square, as well as a two-floor restaurant and Canalside Bar & Terrace that looks out onto Regent's Canal.

# THE LIGHTERMAN

## First Floor Dining Room

Up to 60 seated  
Up to 100 standing



## First Floor Dining Room

With floor-to-ceiling glass walls and an abundance of natural light, the first-floor dining room is a versatile space to host a variety of events. The wraparound terrace offers panoramic views across Granary Square and Regent's Canal,



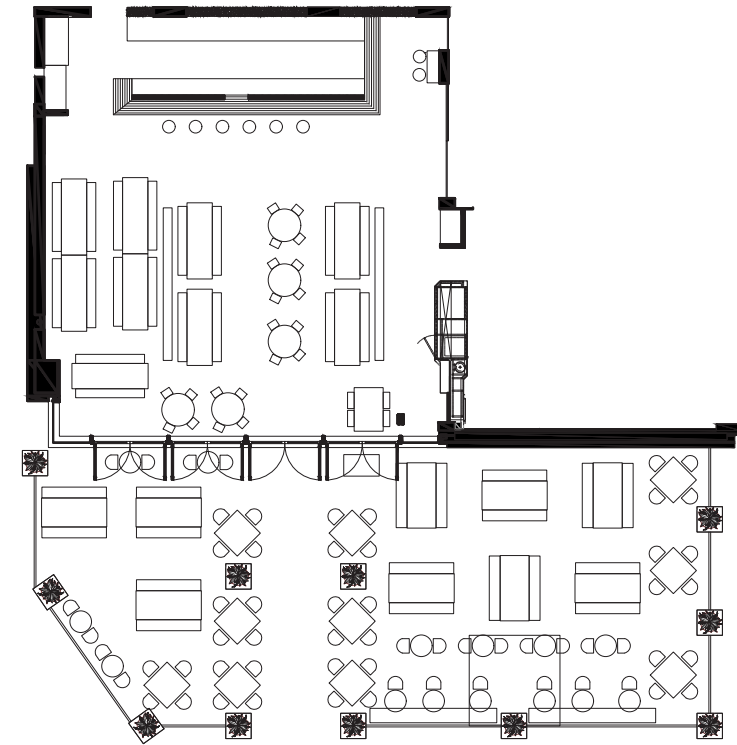


## THE LIGHTERMAN

## Canalside Bar & Terrace

Up to 80 standing guests

Up to 60 seated guests



### The Canalside Bar & Terrace

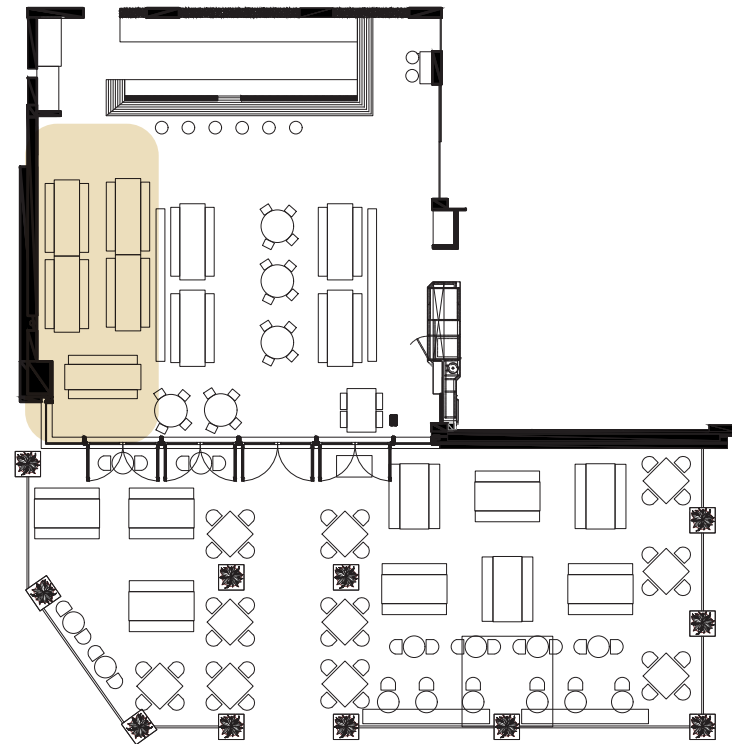
Located on the tranquil towpath of Regent's Canal, the Canalside Bar & Terrace is available for exclusive hire. Whether for lunch or dinner, cocktails or canapés, this stylish waterside location sets the scene for an unforgettable event.



# THE LIGHTERMAN

## Canalside Bar

Up to 35 standing guests  
Up to 30 seated guests  
Semi Private



### The Canalside Bar

An indoor section of the Canalside Bar can be booked for more casual yet intimate gatherings, networking events and corporate lunch meetings.



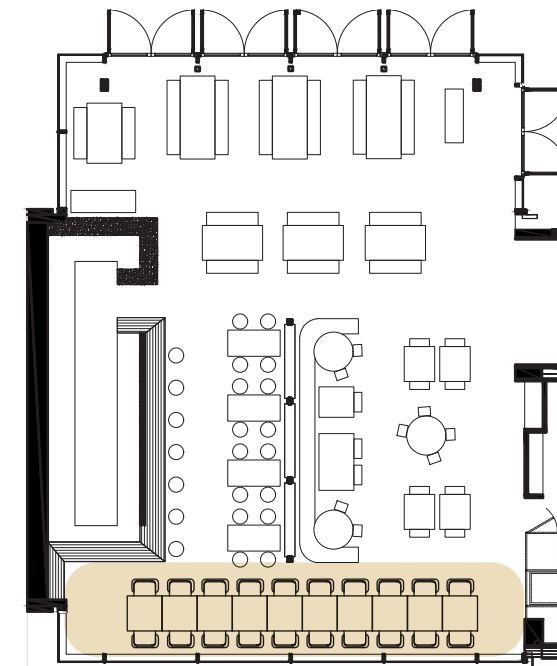


## THE LIGHTERMAN

## Ground Floor Long Table

Up to 20 seated guests

Semi Private



## Ground Floor Long Table

The Ground Floor Long Table is set in a commanding position in the busy ground floor bar overlooking Regent's Canal – perfect for a relaxed lunch or dinner.



## THE LIGHTERMAN

Exclusive Hire

---

**The Lighterman effortlessly accommodates up to 190 seated and 350 standing guests. Exclusive hire is arranged over 3 floors including 3 long bars, a panoramic terrace and 2 additional terraces on Granary Square and Regent's Canal.**

The Lighterman is available for exclusive hire on an occasional basis, making for a truly metropolitan setting for weddings, birthdays and brand

launches Its multifaceted spaces offer a dynamic opportunity to create an unforgettable event.



# Your own personal events team.

**We're on hand to help you create something memorable and really rather special. Get in touch with us below as we'd love to hear from you, no matter the occasion or budget.**

3 Granary Square, London N1C 4BH

020 7034 5428

theligherman.co.uk

@thelightermankx

[View Events Page](#)





# Contact.

**The Lighterman**  
King's Cross

3 Granary Square  
London N1C 4BH  
[theligherman.co.uk](http://theligherman.co.uk)  
[@thelightermankx](https://www.instagram.com/thelightermankx)  
020 3908 7007

**The Broadcaster**  
White City

89 Wood Lane  
London W12 7FX  
[thebroadcaster.co.uk](http://thebroadcaster.co.uk)  
[@thebroadcasterlondon](https://www.instagram.com/thebroadcasterlondon)  
020 3908 7007

[events@openhouselondon.com](mailto:events@openhouselondon.com)